



FLOOR

# FABRIC ART™

COLORBODY™ PORCELAIN with REVEAL IMAGING®

 **daltile**®  
IMAGINE WHAT'S POSSIBLE™



Cover photo features Fabric Art™ Modern Linear Dark Gray 12 x 24 and Modern Kaleidoscope Natural Prism 12 x 24 on the floor. Above photo features Fabric Art™ Modern Textile Medium Gray 24 x 24 and Modern Kaleidoscope Ashen Steel Prism 12 x 24 on the floor and Modern Linear Midnight Blue 12 x 24 on the wall.

## Dramatic Texture Brought To Life

Inspired by the drape of luxurious textiles, Fabric Art™ uses the weaving mill as a muse, delivering porcelain tile that begs to be touched. Woven, linear and kaleidoscope patterns create a subtle reaction to light and deliver ultimate style for today's modern spaces, bringing your vision to life. Each texture can stand alone as a centerpiece, or serve as a well-orchestrated pairing.

- **ABSTRACT ART VISUAL**
  - Features an unpolished finish and gradient, textural variation
  - Available in a modern, neutral palette
- **STRIKING VERSATILITY**
  - Offered in six colors and four decorative accent blends that can be used to create one-of-a-kind designs
  - Available in two floor tile sizes and a 1 x 3 straight-joint mosaic
  - Offers endless possibilities for mixing textures and colors to achieve a personalized look

-  **PRE-CONSUMER RECYCLED MATERIALS**
-  **MADE IN THE U.S.A.**
-  **REVEAL IMAGING®**
-  **TRU-EDGE™**

All or select items within this series meet the requirements for these qualifications. For more information visit [daltile.com](http://daltile.com).



USAGE		
Floors	Walls	Countertops
F	W	C

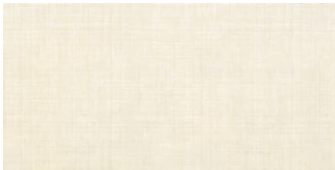
FLOOR TILE –  
MODERN TEXTILE/MODERN LINEAR



MODERN TEXTILE WHITE MT50



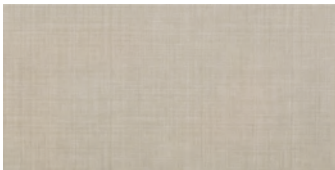
MODERN LINEAR WHITE ML60



MODERN TEXTILE BEIGE MT51



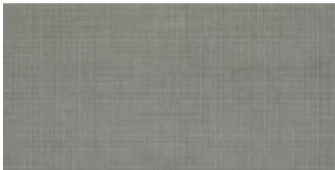
MODERN LINEAR BEIGE ML61



MODERN TEXTILE TAUPE MT52



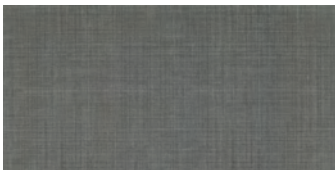
MODERN LINEAR TAUPE ML62



MODERN TEXTILE MEDIUM GRAY MT53



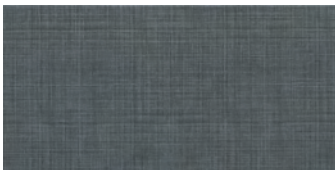
MODERN LINEAR MEDIUM GRAY ML63



MODERN TEXTILE DARK GRAY MT54



MODERN LINEAR DARK GRAY ML64



MODERN TEXTILE MIDNIGHT BLUE MT55

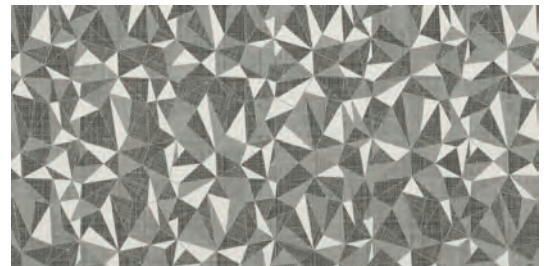


MODERN LINEAR MIDNIGHT BLUE ML65

FLOOR TILE –  
MODERN KALEIDOSCOPE



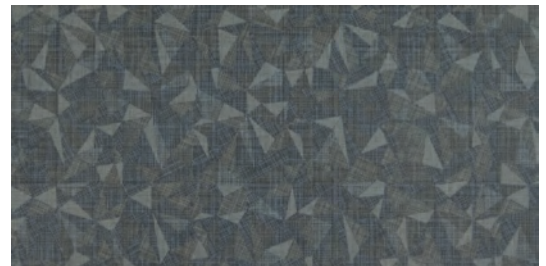
MODERN KALEIDOSCOPE NATURAL PRISM MK70  
Beige/Taupe



MODERN KALEIDOSCOPE WHITE ASH PRISM MK71  
White/Medium Gray/Dark Gray

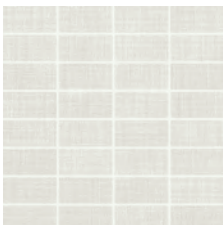


MODERN KALEIDOSCOPE ASHEN STEEL PRISM MK72  
Medium Gray/Dark Gray

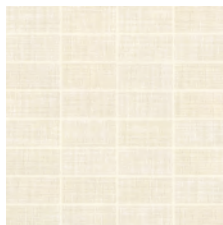


MODERN KALEIDOSCOPE MIDNIGHT STEEL PRISM MK73  
Dark Gray/Midnight Blue

1 x 3 STRAIGHT JOINT MOSAIC (Available in Modern Textile only)



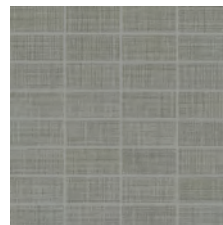
MODERN TEXTILE  
WHITE MT50



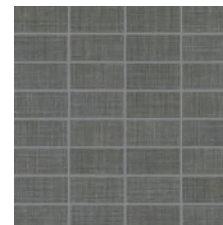
MODERN TEXTILE  
BEIGE MT51



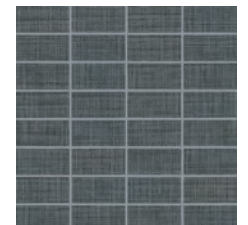
MODERN TEXTILE  
TAUPE MT52



MODERN TEXTILE  
MEDIUM GRAY MT53



MODERN TEXTILE  
DARK GRAY MT54



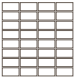


MODERN TEXTILE  
MIDNIGHT BLUE MT55

# FABRIC ART™

COLORBODY™ PORCELAIN with REVEAL IMAGING®

## SIZES

			Thickness	Sq. Ft./ Carton	Pieces/ Carton
	24 x 24 Floor Tile ■	(23-7/16" x 23-7/16") (59.44 cm x 59.44 cm)	3/8"	15.20	4
	12 x 24 Floor Tile	(11-11/16" x 23-7/16") (29.56 cm x 59.44 cm)	3/8"	15.12	8
	1 x 3 Straight-joint Mosaic ■ (Mesh-mounted on 12 x 12 Sheet)	(11-5/8" x 11-13/16" Sheet) (29.61 cm x 29.99 cm Sheet)	3/8"	9.56	10

■ Available in Modern Textile only.

## APPLICATIONS

	Target DCOF wet	Suitable
Dry & Level – Interior Floor	N/A	✓
Wet & Level – Interior Floor	≥ 0.42	✓
Shower Floors (Residential or Light Commercial)	≥ 0.42	✓*
Exterior Floor Applications (including pool decking & other wet areas with minimal footwear)	≥ 0.60	
Ramps & Inclines	≥ 0.65	
Walls/Backsplashes	N/A	✓
Countertops	N/A	✓
Pool Linings	N/A	✓*




A DCOF value of ≥ 0.42 is the standard for tiles specified for level interior spaces expected to be walked upon when wet, as stated in ANSI A137.1-2012, Section 9.6. For more information about DCOF and the DCOF AcuTest™, visit [daltile.com/DCOF](http://daltile.com/DCOF).

### APPLICATION NOTES:

Suitable for exterior applications in freezing and non-freezing climates, when proper installation methods are followed.

\* Mosaic tile only.

## TRIM

	Type	Number	Size	Pieces/ Carton
	Bullnose ■	P-43C9	3 x 12	30
	Cove Base ■	P-36C9T	6 x 12	22
	Cove Base Outcorner ■	PC-36C9T	1 x 6	15


■ Available in Modern Textile only.

Bullnose in Modern Linear and Modern Kaleidoscope available through Special Order with extended lead time.

Floor bullnose and cove base trim are intended to coordinate with floor tile in the standard 90-degree installation position.

Cove base and cove corner trim are suitable for non-freezing climates only.

## INSTALLATION

Grout Joint Recommendation	Shade Variation
1/8" (3/16" when multiple sizes are installed in a modular pattern, and/or when installing tile with a length 15" or greater in a staggered brick-joint pattern; overlap should not exceed 33%)	 Medium (V2)

## PERFORMANCE CHARACTERISTICS

	ASTM#	Result
Water Absorption	C373	< 0.5%
Breaking Strength	C648	> 275 lbs
Scratch Hardness	MOHS	8.0
Chemical Resistance	C650	Resistant
Abrasion Resistance	C1027	N/A

For additional information on test results, visit us at: [daltile.com/information/TestResults](http://daltile.com/information/TestResults).

## NOTES

Since there are variations in all fired ceramic and natural products, tile and trim supplied for your particular installation may not match samples. Final confirmation should be made from actual tiles and trim prior to installation. Manufactured in accordance with ANSI A137.1 standards.

Not for use on ramps. Water, oil, grease, improper drainage and certain footwear can create slippery conditions. Floor applications expected to be exposed to these conditions require extra caution in product selection.

For additional information refer to "Factors to Consider" at: [daltile.com/Factors](http://daltile.com/Factors).

Special consideration needs to be given when installing tiles greater than 15 inches. Please refer to [daltile.com/LargeTiles](http://daltile.com/LargeTiles) for more information.

Special care should be taken when grouting with dark pigmented colors. A grout release is recommended to prevent finely powdered pigments from lodging in the pores of the surface. Use of a latex modified thin-set is recommended for installation.



DESIGNED TO HELP EARN LEED™ CREDITS. For more detailed information, visit [daltilegreenworks.com](http://daltilegreenworks.com).



SCAN QR CODE FOR PRODUCT INFORMATION

Get a QR Code reader at: [GET.DAL TILE.COM](http://GET.DAL TILE.COM)



7834 C. F. Hawn Freeway,  
Dallas, Texas 75217 | 1.800.933.TILE

To view the complete collection of Daltile® products and information, visit our website at [daltile.com](http://daltile.com).



IMAGINE WHAT'S POSSIBLE™

©2017 Daltile (4/17)